



Fulton SYSTEMS

Fulton Systems, Inc.
5875 Peachtree Industrial Blvd.
Suite 330, Norcross, GA 30092

©Copyright 2024 Fulton Systems, Inc. All Rights Reserved

SEPARATOR MODULES

SEPARATOR MODULES

PRODUCT

Fulton Systems modular steam and condensate modules

SIZE

Condensate flows to 500 gallons per minute. Horizontal and Vertical tank arrangements available.

DESCRIPTION

Units supplied in modular form with equipment mounted on a structural frame base. Separator tanks receive the two-phase mixture of blowthrough steam and condensate from the dryer section. Internal baffling combined with conservative fluid velocities, separates the two-phase flow. The steam exits the separator and is made available to the process. The condensate level in the tank is automatically controlled through a condensate pump and level valve to maintain constant level conditions.



PRIMARY USE

Dryer steam and condensate systems for conventional Yankee Systems and all condensate collection applications.

DESIGN

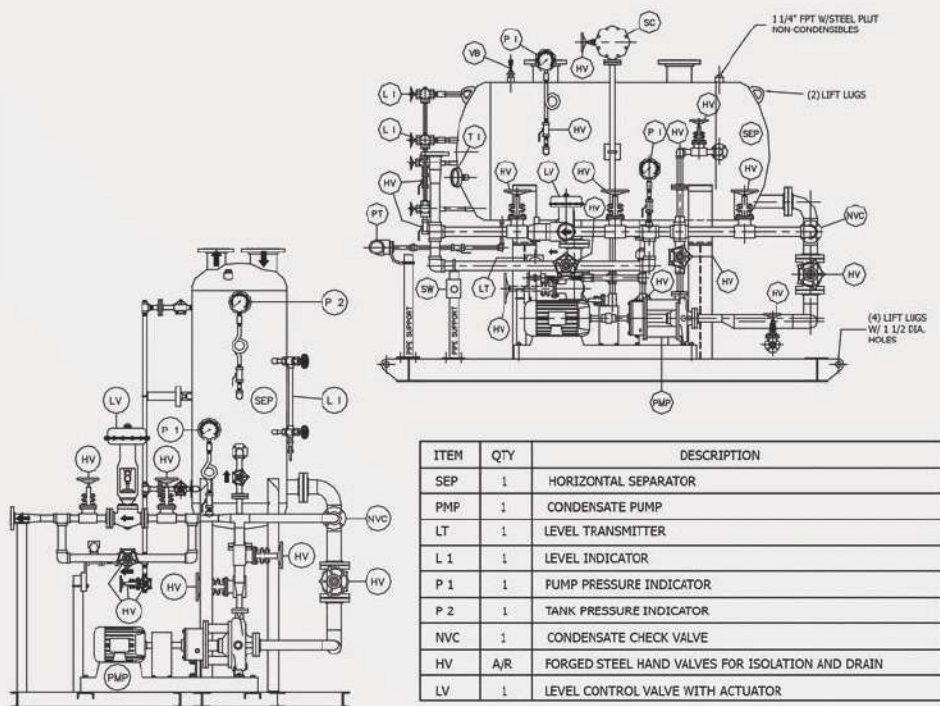
Standards for pressure up to 175 psig at 400 Deg. F. US and Canadian Registration available.

CONSTRUCTION

Carbon steel channel frame with solid carbon steel base plate. Installation is facilitated by leveling and grouting. Carbon steel tank supports. Baffled low pressure drop carbon steel separator tank bearing A.S.M.E. and National Board registration. ANSI centrifugal condensate pump with C.I. bedplate, coupling, coupling guard, and TEFC motor. Required ANSI steel manual hand valves for control, equipment isolation, and drain. Carbon steel interconnecting piping between equipment and separator. Automatic level controller. Level control valve complete with pneumatic fail open actuator. Low level pump shut-off. Steel switch panel for housing pump ladder logic, pressure switch. Hand-Off-Auto, 3-position switch and two process pressure gauges. Temperature gauge with stainless thermowell. Visual level indicator. All bare metal surfaces prime painted for protection in transit.

FEATURES

Eliminates expensive field assembly. All equipment supplied is custom engineered and selected to meet specific machine needs. Minimum field effort required for installation. Units are ready for service after removing all shipping braces, connecting process piping and supplying electrical power to the pump. A wide variety of OEM components are available to meet individual needs and preferences.



5-2005 FSI-106

Fulton SYSTEMS

CONTACT US

5875 Peachtree Industrial Boulevard, Suite 330,
Norcross GA 30092-3401

Office : 770.447.1400

Fax : 770.447.4277

www.fultonsystems.com