

A photograph of a large industrial facility, likely a power plant or refinery, showing multiple levels of metal walkways and railings. The ceiling is high with exposed pipes and lighting fixtures. The floor is polished and reflects the overhead lights. The image is partially obscured by a white geometric overlay on the left side.

Fulton SYSTEMS

Fulton Systems, Inc.
5875 Peachtree Industrial Blvd.
Suite 330, Norcross, GA 30092

©Copyright 2024 Fulton Systems, Inc. All Rights Reserved

STEAM CONDENSER

STEAM CONDENSER

PRODUCT

Horizontal Multi-Pass Steam Condenser

SIZE

12", 14", 18" and 24" Shell Diameter with condensing capacities to 12,900,000 B/hr. Special unit sizes are available upon request.

DESCRIPTION

Shell and tube steam condenser, multi-pass counter current flow. TEMA type BFT with straight tubes and floating head. Tubes are rolled into stationary tube sheets on one end and a floating head tube sheet at the opposite end. Units supplied complete with saddle supports for horizontal installation.



PRIMARY USE

Paper Machine (Conventional and Yankee) Steam and Condensate

DESIGN

Shell side pressure full vacuum to 150 psig at 400°F.
Tube side pressures to 100 psig at 340°F.

MATERIALS OF CONSTRUCTION

SHELL SIDE (STEAM)

Shell and Head: A.S.M.E. Stamped Carbon Steel

Nozzles: 150# ANSI B16.5

Nozzle Inlet Head: Ductile Iron

TUBE SIDE (COOLING WATER)

Tubes available: Admiralty Brass, 304 or 316 Stainless Steel, 90/10 or 70/30 Cupro Nickel

Tube Diameters: 5/8" O.D. (Standard) 3/4" and 1" Cupro Nickel Available.

Tube Sheets: Carbon Steel (Standard), Stainless Steel and

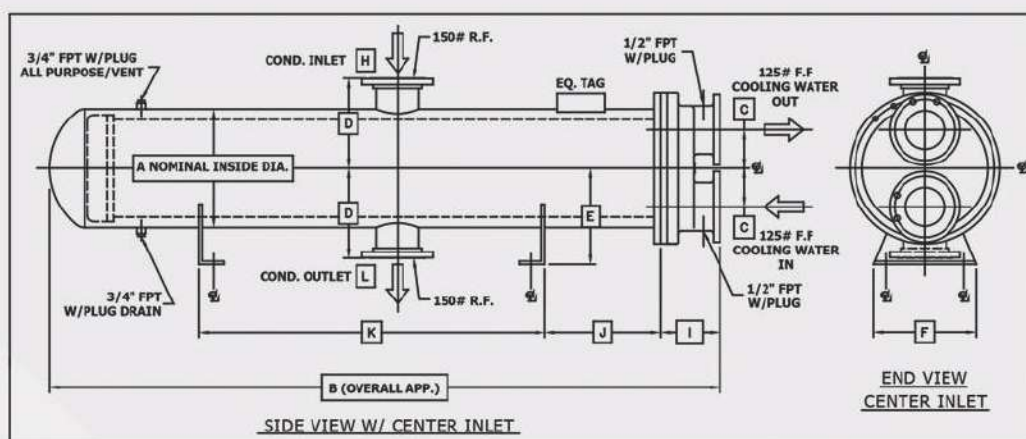
Baffles: Stainless Steel

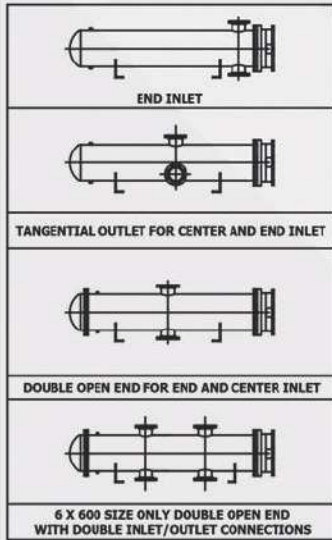
Tube supports & Tie Rods: Carbon Steel

Stationary/Floating Head: Ductile Iron

FEATURES

Recovers condensate and latent heat in waste steam. An essential piece of equipment for evacuating blow throughsteam and condensate from low-pressure dryers. Provides heat recovery capabilities and increased energy efficiency for sheet break and other upset operating conditions. Improves papermaker's machine control. Floating head design provides maximum accessibility and eliminates thermal expansion problems. For easy cleaning and maintenance, double open-ended construction is available. This facilitates on site cleaning of tubes when removal of tube bundle would otherwise be difficult. Fulton Systems offers in-house repair and reconditioning rebuild services.





SIZE	A	B	C	D	E	F	G	H	I	J	K	L	BUNDLE LENGTH
3 X 85	12"	87 3/4"	4 1/2"	10"	10"	8"	3"	3"	8"	11"	66 1/2"	3"	72"
3 X 74	12"	88 3/4"	4 1/2"	10"	10"	8"	3"	3"	6"	11"	66"	3"	84"
4 X 115	14"	89"	5"	12"	11 3/4"	12"	4"	6"	9"	12"	54"	4"	72"
4 X 132	14"	101"	5"	12"	11 3/4"	12"	4"	6"	9"	12"	66"	4"	84"
6 X 200	16"	92 1/4"	6"	14"	16"	16"	6"	8"	9 1/4"	18"	44"	6"	72"
6 X 230	16"	104 1/2"	6"	14"	16"	16"	6"	8"	9 1/4"	18"	54"	6"	84"
6 X 350	24"	92 1/2"	9"	18"	17"	18"	6"	8"	10 5/8"	20"	42"	6"	72"
6 X 400	24"	104 1/2"	9"	18"	17"	18"	6"	8"	10 5/8"	20"	54"	6"	84"
6 X 600	24"	146"	9"	18"	18"	18"	6"	8"	10 3/4"	29"	66"	6"	126"

1. ALL BOLT HOLES STRADDLE CENTERLINES
 2. A.S.M.E.SEC. II, DIV. 1 STAMP & N.B. REG.
 3. TWO AND FOUR PASS UNITS AVAILABLE
 4. TUBES ARE STANDARD 5/8" O.D. (BRASS & ST. STEEL AVAILABLE)

5. TUBE SIDE CONFIGURATION OPTIONS ARE NOT AVAILABLE ON OUR STANDARD UNITS. HOWEVER, THEY MAY BE AVAILABLE ON A SPECIAL REQUEST BASIS. PLEASE CONTACT FULTON SYSTEMS FOR MORE INFORMATION.

5-2005 FSI-104

Fulton SYSTEMS

CONTACT US

5875 Peachtree Industrial Boulevard, Suite 330,
Norcross GA 30092-3401

Office : 770.447.1400

Fax : 770.447.4277

www.fultonsystems.com