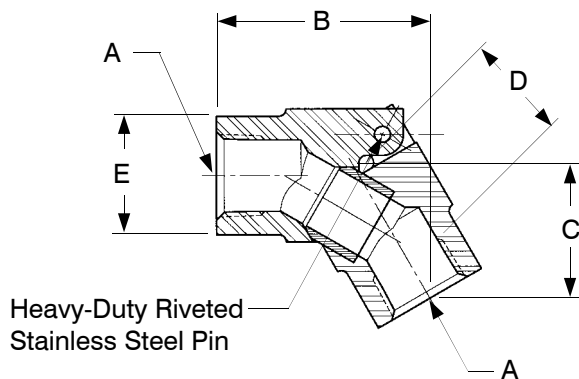


BARCO SERIES Syphon Elbows

Hinged and Supported Syphon Elbows

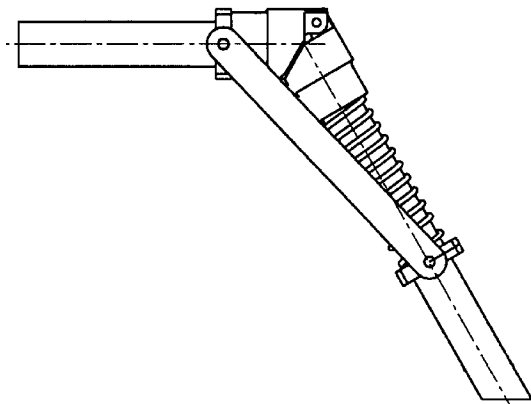
Standard Hinged Syphon Elbow



Size Range & Dimension Data

Syphon Size (A)	Part Number	B	C	D	E
1/2"	10-65547-00	2.60"	1.50"	1.23"	1.25"
3/4"	10-65548-00	2.70"	1.56"	1.23"	1.62"

Supported Hinged Syphon Elbow



Size Range & Minimum Journal Bore

Syphon Size	Elbow & Bracket Assy	Min. Journal Bore	
		Elbow Only	Bracket Assy
1/2"	10-68968-00	1.30"	2.00"
3/4"	10-68967-00	1.70"	2.38"

For more information, contact:

Fulton
SYSTEMS

Fulton Systems
5875 Peachtree Industrial Blvd.
Suite 330
Norcross, GA 30092
Phone: 770.447.1400
Fax: 770.447.4277
www.fultonsystems.com

Barco USA
1100 Alexander Court
Cary, IL 60013-1892
Phone: (847) 516-0900
Fax: (847) 516-5590

Printed in U.S.A. 06-04.

Specifications subject to change without notice.
Barco products are protected by patents internationally.
Copyright ©1998 Barco Division Marison Industries, Inc.

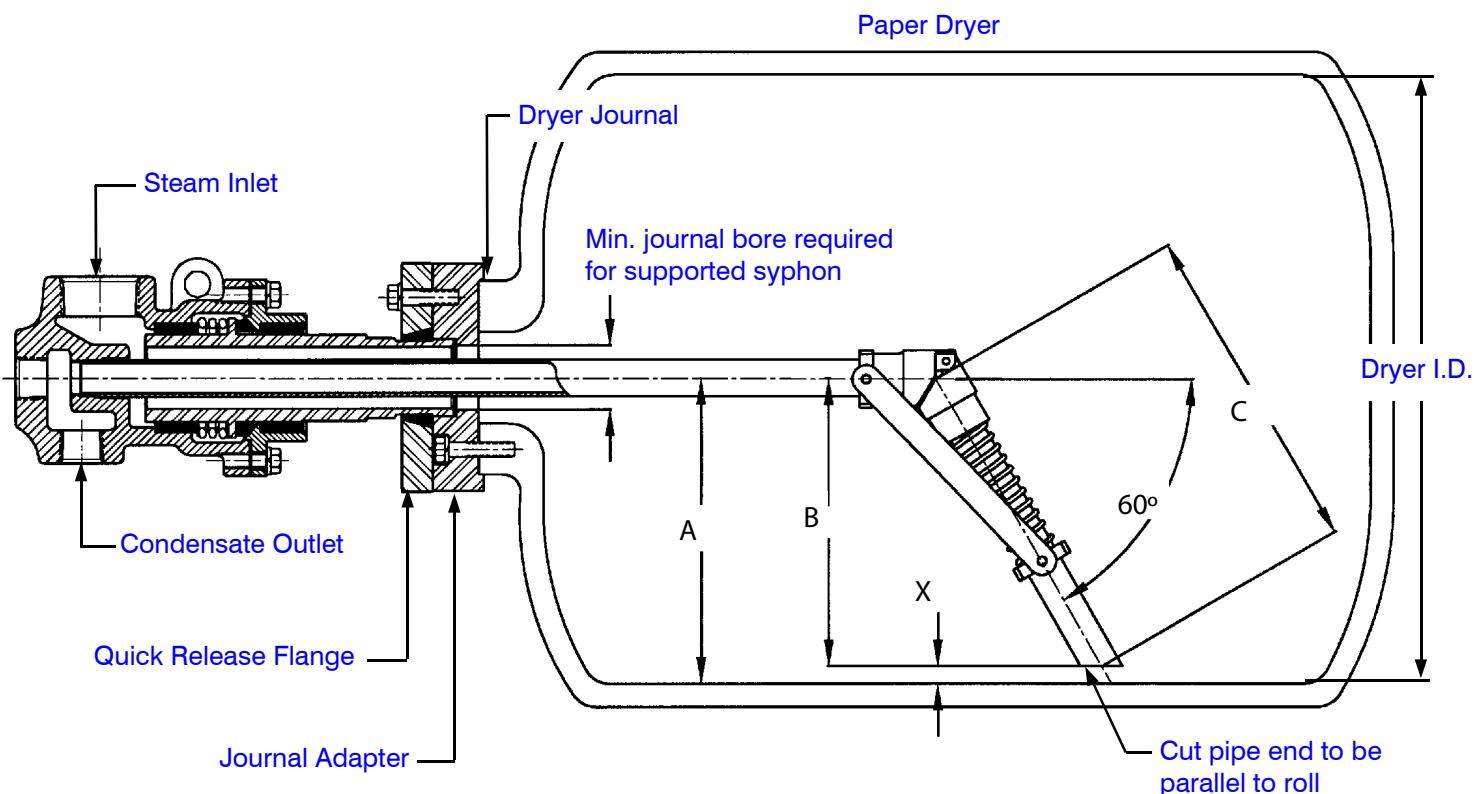
www.barcoseals.com
e-mail: info@barcoseals.com



A DIVISION OF MARISON INDUSTRIES

BARCO SERIES Stationary Syphon Assembly

Installation and Syphon Pipe Length Determination for Type "C" and Super G Rotary Joints



Determining Syphon Pipe

To determine the length of the syphon pipe, the following procedure must be used.

1. Determine dimension "A" : distance from center line of roll to inside face of roll.
2. Calculate dimension "B" : subtract dimension "X" (desired clearance between inside face of roll to end of the angled syphon pipe) from dimension "A" (see step 1). $B = A - X$.
3. Calculate dimension "C" : multiply dimension "B" by 1.154. $C = B \times 1.154$.
4. Calculate syphon pipe length "Y" = C-1.2 3.

Note: The end of the syphon pipe must clear inside face of roll to prevent damage to the roll, syphon piping and rotary joint. At the time that the rotary joint is removed for service, check syphon pipe for any corrosion or clogging. Teflon tape or anti-corrosion compound on syphon elbow pipe threads.

For more information, contact:

Fulton
SYSTEMS

Fulton Systems
5875 Peachtree Industrial Blvd.
Suite 330
Norcross, GA 30092
Phone: 770.447.1400
Fax: 770.447.4277
www.fultonsystems.com