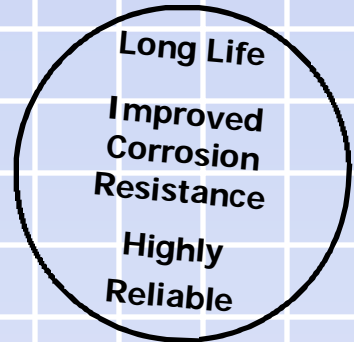


BARCO SERIES

SUPER G

Rotary Steam Joint

For Open Gear Paper Machines



Special Design Features

- **Antimony seals and bearings are standard**
- **Two widely spaced bearing for stability, greater syphon support and longer wear.**
- **Available in quick release flange assembly or threaded sleeve.**
- **External seal wear indicator for preventive maintenance.**
- **All wear surfaces are treated for improved corrosion resistance.**
- **Directly interchangeable with competitive designs.**
- **Seal under compression design can better handle pressure surges and promotes longer life.**



For stationary syphons
Available sizes: 1-1/4", 1-1/2" and 2"

Operating Parameters :

Pressure Rating -	
Steam	250 psi (17,5 Kg/cm ²)
Temperature	+406°F (207°C)

These rotary joints feature a ductile iron casing, ferrous sleeve and end cap, stainless steel springs and spring guides.

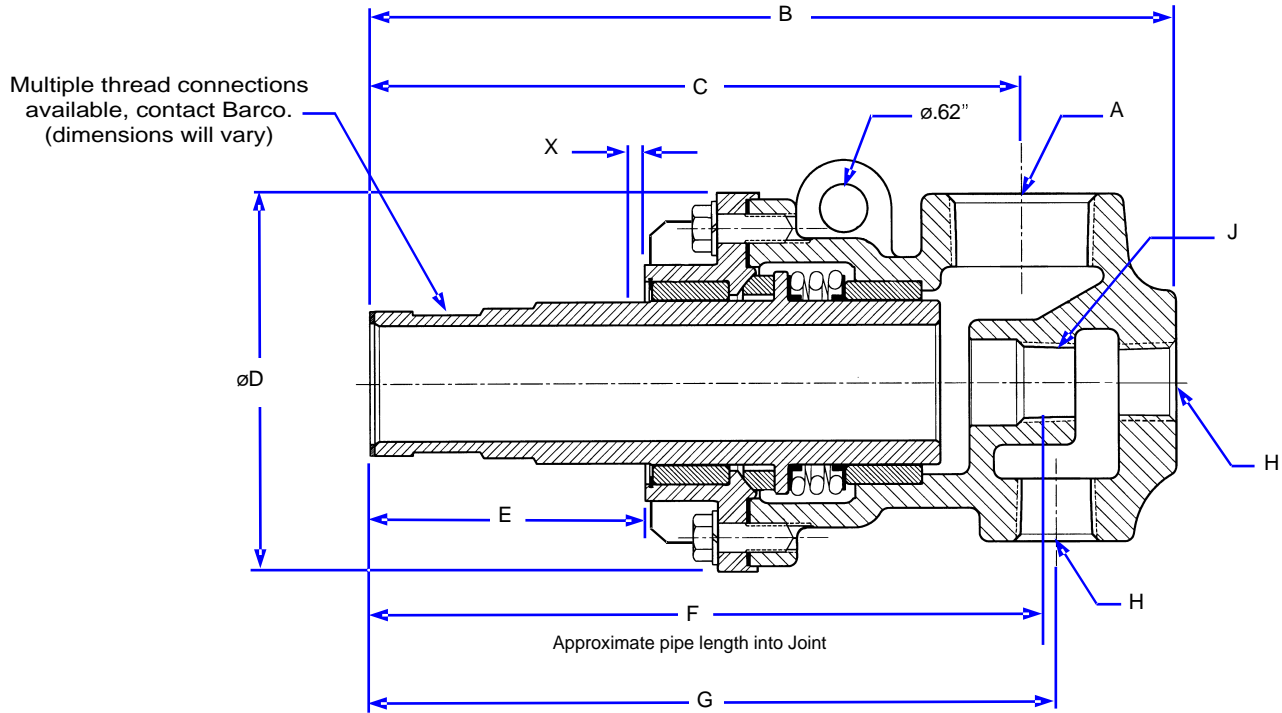
The high density carbon seal under compression and widespread bearing surfaces assure exceptionally long life without lubrication.



BARCO SERIES

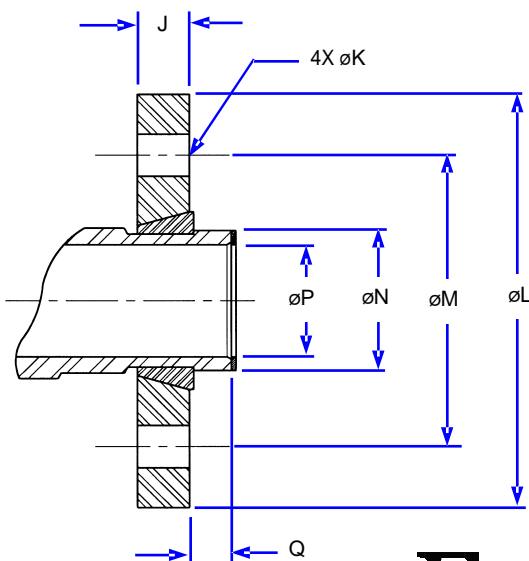
Super G Rotary Steam Joints

For Open Gear Paper Machines with Stationary Syphons



JOINT SIZE	PART NUMBER	A THREAD NPT	B	C	øD	E	F	G	H THREAD NPT	J THREAD NPT	X
1-1/4"	BC-76000-20-62	1-1/4"	10.45" (265)	8.54" (217)	4.38" (111)	3.48" (88)	9.00" (229)	8.85" (225)	3/4"	1/2"	.34" (8,6)
1-1/2"	BC-76000-24-62	1-1/2"	10.87" (276)	8.87" (225)	4.75" (121)	3.63" (92)	9.35" (237)	9.31" (236)	3/4"	3/4"	.34" (8,6)
2"	BC-76000-32-62	2"	12.02" (305)	9.46" (240)	6.00" (152)	3.20" (81)	10.07" (256)	10.08" (256)	1-1/4"	3/4"	.41" (10)

Flange Detail



JOINT SIZE	PART NUMBER *	J	øK	øL	øM	øN	øP	Q
1-1/4"	10-64034-43	.62" (16)	.56" (14)	5.50" (140)	3.50" (89)	1.620"-1.622" (41,15-41,20)	1.25" (32)	.500" (13)
1-1/2"	10-64035-43	.69" (17)	.56" (14)	5.50" (140)	3.58" (98)	1.870"-1.872" (47,50-47,55)	1.50" (38)	.500" (13)
2"	10-64036-43	.75" (19)	.56" (14)	6.81" (173)	4.75" (121)	2.318"-2.320" (58,88-58,93)	1.88" (48)	.625" (16)
2-1/2"	10-64037-43	.88" (22)	.56" (14)	6.75" (171)	4.75" (121)	2.836"-2.838" (72,03-72,08)	2.38" (60)	.748" (19)
3"	10-64038-43	.94" (24)	.69" (18)	8.00" (203)	6.75" (171)	3.428"-3.430" (87,07-87,12)	2.88" (73)	.878" (22)

*Kit Consists of Split Wedges, Flange and Gasket.
Special flanges available on request, contact Barco.

For more information contact:



Fulton Systems
5875 Peachtree Industrial Blvd.
Suite 330
Norcross, GA 30092
Ph: 770-447-1400
Fx: 770-447-4277
www.fultonsystems.com