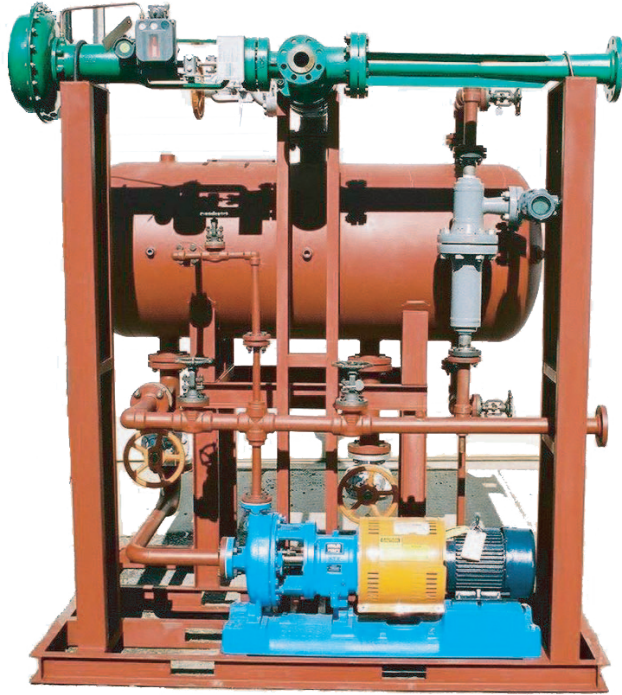


# FULTON SEPARATOR MODULES



**Fulton**  
**SYSTEMS**

5875 Peachtree Industrial Blvd.  
Suite 330 Norcross, GA 30092

Phone: 770.447.1400 Fax: 770.447.4277

[www.fultonsystems.com](http://www.fultonsystems.com)

Product:  Fulton Systems modular steam and condensate modules

Size:   Condensate flows to 500 gallons per minute. Horizontal and Vertical tank arrangements available.

Description:  Units supplied in modular form with equipment mounted on a structural frame base. Separator   
  tanks receive the two-phase mixture of blowthrough steam and condensate from the dryer section.   
  Internal baffling combined with conservative fluid velocities, separates the two-phase flow. The   
  steam exits the separator and is made available to the process. The condensate level in the tank is   
  automatically controlled through a condensate pump and level valve to maintain constant level   
  conditions.

Primary Use:  Dryer steam and condensate systems for conventional Yankee Systems and all condensate   
  collection applications.

Design:  Standards for pressure up to 175 psig at 400 Deg. F. Canadian Registration available.

Construction: Carbon steel channel frame with solid carbon steel base plate. Installation is facilitated by leveling   
  and grouting. Carbon steel tank supports. Baffled low pressure drop carbon steel separator tank   
  bearing A.S.M.E. and National Board registration. ANSI centrifugal condensate pump with C.I.   
  bedplate, coupling guard, and TEFC motor. Required ANSI steel manual hand valves for   
  control, equipment isolation, and drain. Carbon steel interconnecting piping between equipment   
  and separator. Automatic level controller. Level control valve complete with pneumatic fail open   
  actuator. Low level pump shut-off. Steel switch panel for housing pump ladder logic, pressure   
  switch. Hand-Off-Auto, 3-position switch and two process pressure gauges. Temperature gauge   
  with stainless thermowell. Visual level indicator. All bare metal surfaces prime painted for   
  protection in transit.

Features: Eliminates expensive field assembly. All equipment supplied is custom engineered and selected to   
  meet specific machine needs. Minimum field effort required for installation. Units are ready for   
  service after removing all shipping braces, connecting process piping and supplying electrical   
  power to the pump. A wide variety of OEM components are available to meet individual needs and   
  preferences.

